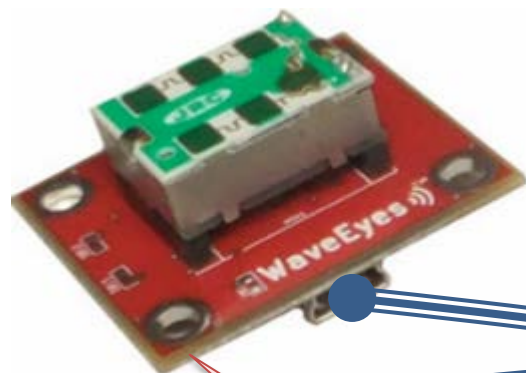


Evaluation Kit of NJR4265

Evaluation Kit



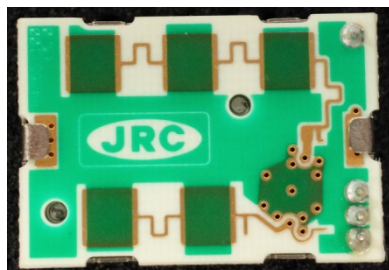
Approaching
Not detect
Leaving



USB cable



Module



Evaluation Board

Translating
UART to USB

USB Output



Instructions (1)

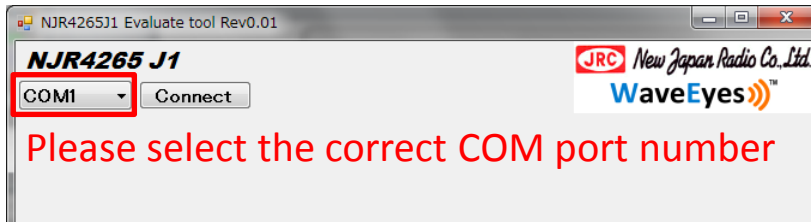
Installation of Application Software and Driver

1. Please check to install the ".Net Framework 4.0" or upgrade version in your PC. If it does not have it, please download it from Microsoft's following URL and install the ".Net Framework" to your PC.
<http://www.microsoft.com/en-US/download/details.aspx?id=17851>
2. Please run the enclosed driver file for windows PC and install the USB driver to your PC. In case of 32 bit windows the driver file should be "CP210xVCPInstaller_x86.exe" and in case of 64 bit windows the driver file should be "CP210xVCPInstaller_x64.exe".
If you can not complete to install, please do item 2.1 - 2.5.
 - 2.1. Please open the "Device Manager" in your PC and connect the NJR4265 evaluation board with USB cable.
 - 2.2. If not complete to install, the device manager will show an unknown device when connect the evaluation board.
 - 2.3. Please open the properties of the unknown device and select the button of "driver install"
 - 2.4. Please select a directory of the driver folder and the driver will be installed
 - 2.5. If the driver installation is finished completely, the "Silicon LabsCP210x USB to UART Bridge (COMxx)" will be shown in a "Port (COM and LPT)" session of the device manager.
If the driver installation is not finished completely, please restart Window OS with connection of the NJR4265 evaluation board on your PC and retry to do item 2.1 - 2.5.
3. Please run the enclosed file of the GUI application software: "NJR4265J1-EP001-0.0.1E.exe"

Instructions (2)

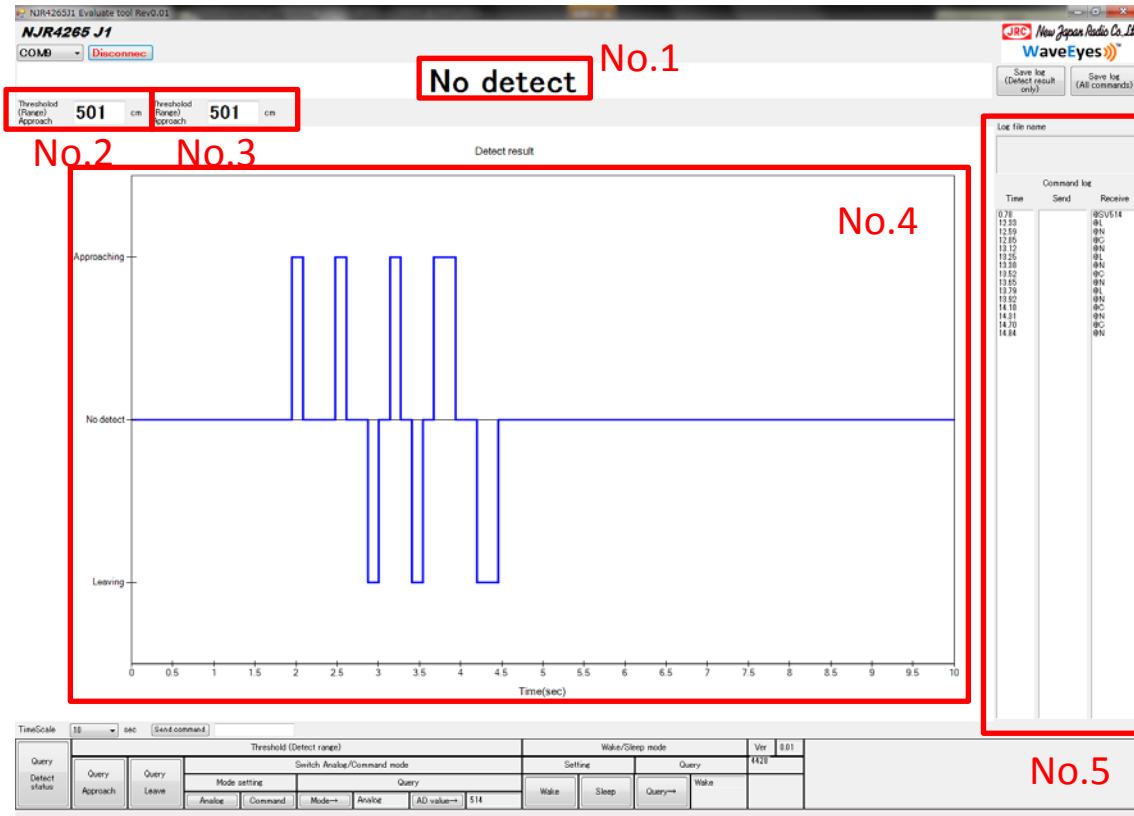
GUI Application Software

1. Please run the enclosed file of the GUI application software: “NJR4265J1-EP001-0.0.1E.exe”.
2. Please select the correct COM port number in pull down menu, click the “connect” bottom, and then the GUI will connect the evaluation board.
The correct COM port number can be check by the “Silicon LabsCP210x USB to UART Bridge (COMxx)” in a “Port (COM and LPT)” session of the device manager.



GUI Application Software

Information of GUI Application Software

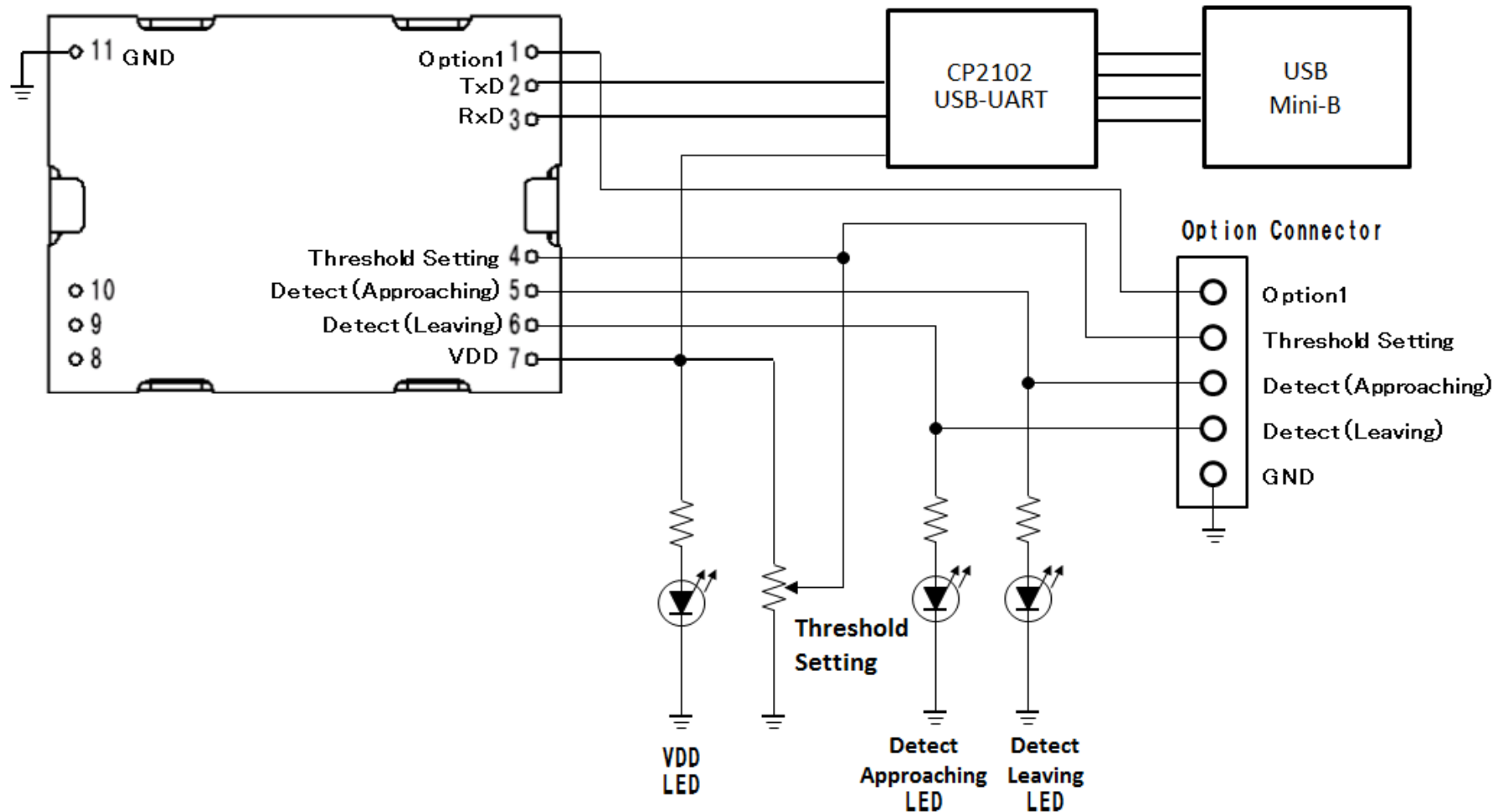


No.	Description
No.1	Detection Information: It will show “No detect”, “Approaching”, or “Leaving”.
No.2	Threshold of Approaching: It sets up and displays threshold.
No.3	Threshold of Leaving: It sets up and displays threshold.
No.4	Graph Display: It will display the detection information result in time dimension.
No.5	Command Log: It will display the command logs for send (PC to Kit) and receive (Kit to PC)

GUI Application Software: Mode Setting



Evaluation Board: Block Diagram



Evaluation Board: Functions and Layout

